

Chapter

3

Assembly Procedure

Please follow the information provided in this section to perform the complete assembly procedure of the notebook. Be sure to use proper tools described before.

After you have completed the previous chapter of complete disassembly, please follow this chapter to assemble the notebook back together. This chapter describes the procedures of the complete notebook assembly. In addition, in between procedures, the detailed assembly procedure of individual modules will be provided for your service needs.

The assembly procedure consists of the following steps:

- LCD Module
- CPU FAN Module
- HDD Module
- Motherboard
- WLAN module
- Top Case Module
- Keyboard
- ODD Module
- Memory Module
- Battery Module

LCD MODULE

LCD Module

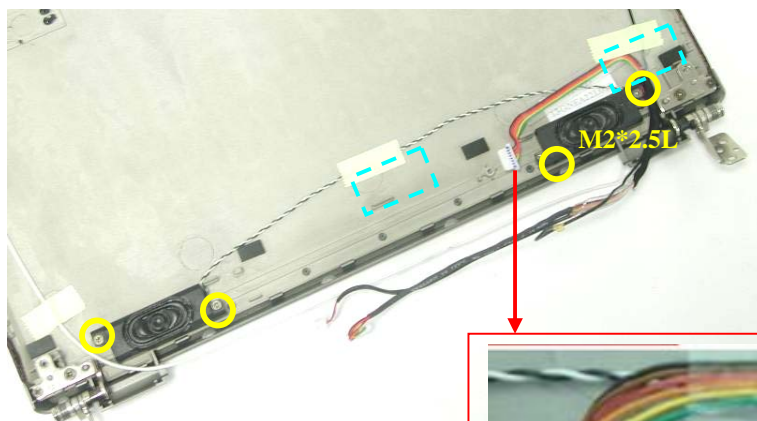
The illustrations below show how to assemble and install the LCD module of the notebook.

I

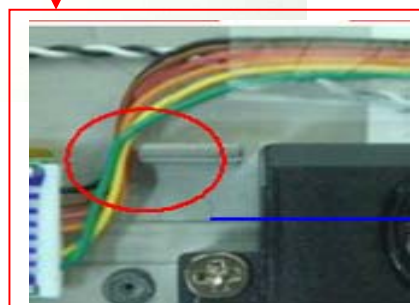
1. Insert the both hinge and secure 4 screws (M2 *2L (K)) on the LCD back cover.



2. Insert the speaker module and secure 2 piece of tapes and 4 screws (M2 *2.5L (K)) to secure it.



Arrange the cable at the left side of the hook.

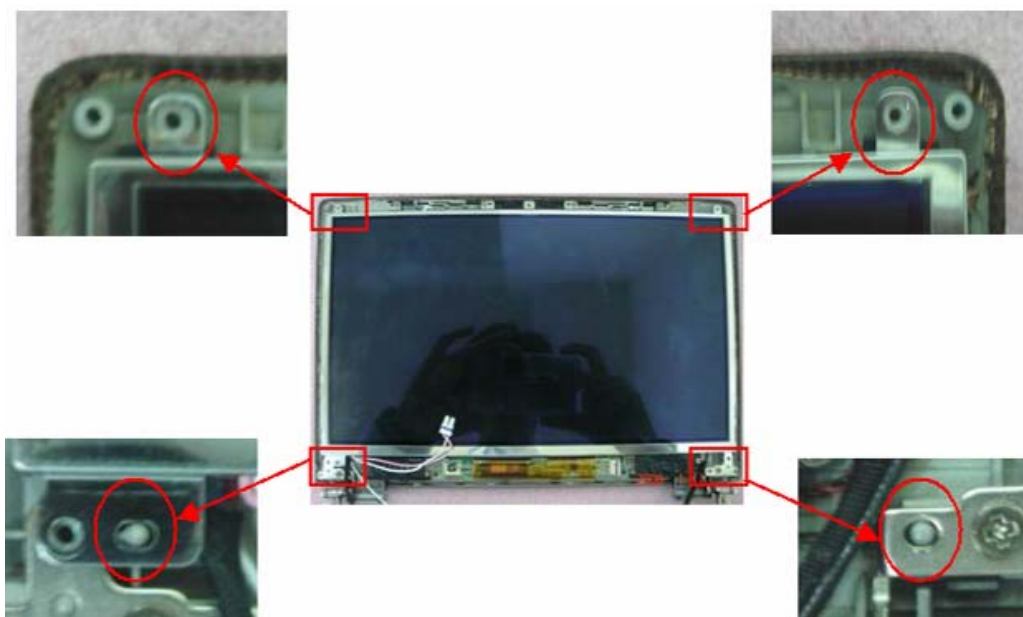


-
3. Connect the coaxial cable and paste 1 piece of tape.

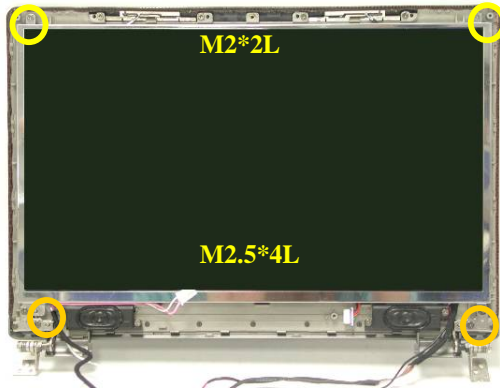


Assembly LCD Module

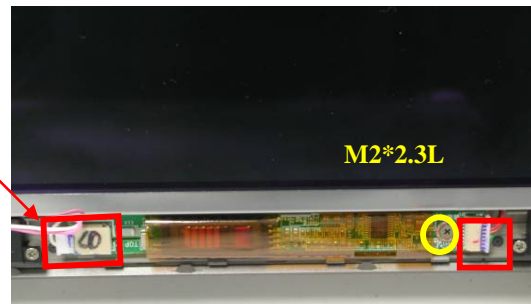
1. Put LCD panel in correct position, and assemble into LCD Back cover.



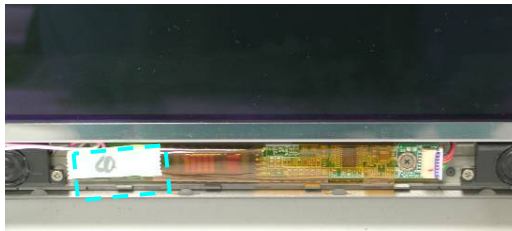
2. Secure 2 screws (M2 *2L (K)) & 2 screws (M2.5*4L (K)) to secure it.



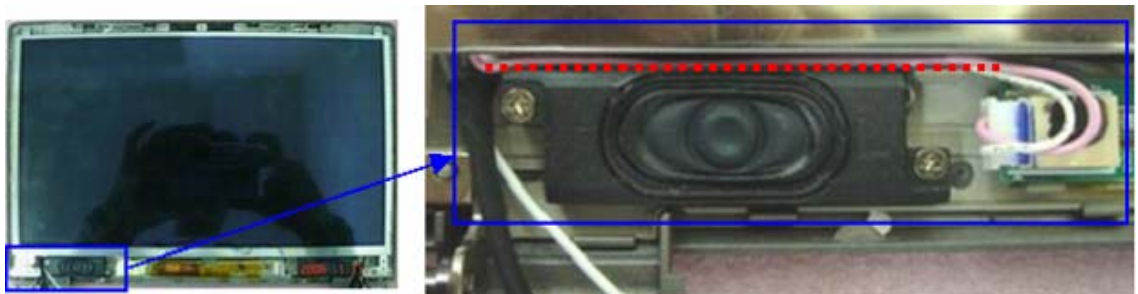
3. Insert the inverter board into the right position and secure 1 screw (M2 *2L (K)) to secure it.



4. Paste 1 piece of tape on the inverter board.



5. Arrange the LCD power cable between LCD panel and speaker.



6. Combine the LCD bezel and LCD Cover properly and press on all four edges until them snap into position.
7. secure 3 screws (M2.5 x 7L) and 3 rubber pads on LCD module.

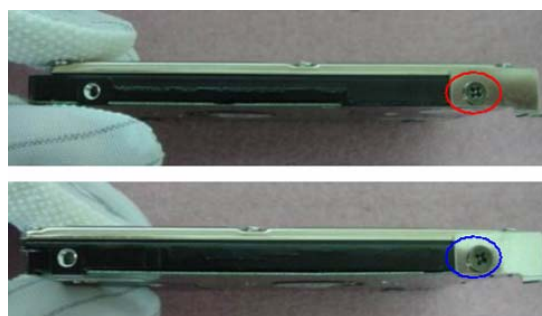


HDD MODULE

HDD Module

The illustrations below show how to assemble and install the HDD module of the notebook

1. Secure 2 screws (M3*3L (K)) to fix HDD into HDD bracket.

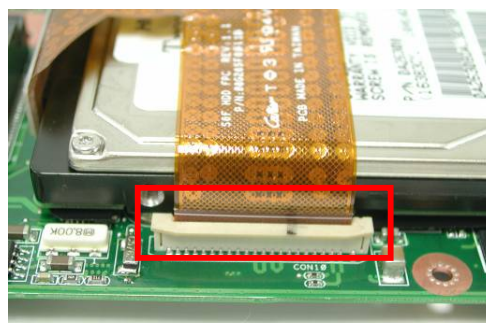


HDD INSTALLATION

2. Connect the HDD FPC.



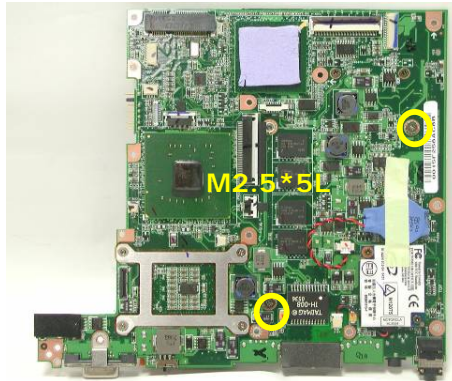
3. Install the HDD module into the MB and connect the HDD FPC to secure it.



4. Paste 1 piece of tape on the HDD FPC.



5. Turn over the MB and secure 2 screws (M2.5*5L (K)) to secure the HDD module.



CPU MODULE

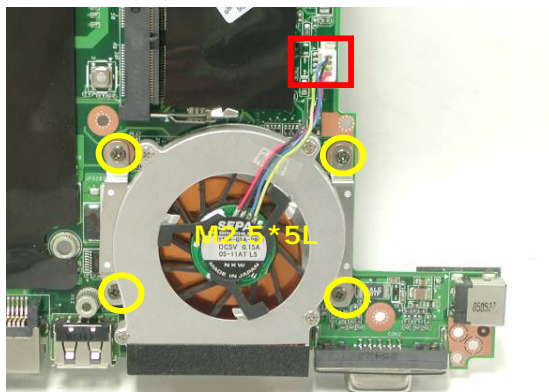
CPU

INSTALLATION

CPU Module Assembly

The illustration below shows how to install CPU and the CPU heat sink of the notebook.

1. Install the FAN module and secure 4 screws (M2.5*5L (K)) and connect the CPU Fan cable to secure it.



MOTHERBOARD

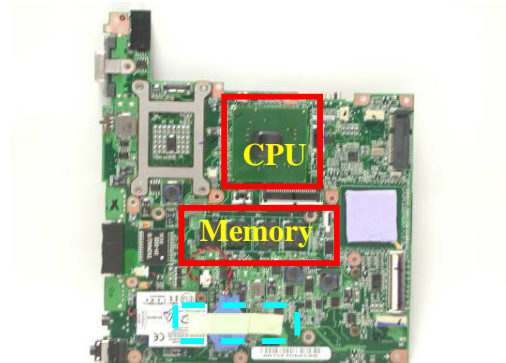
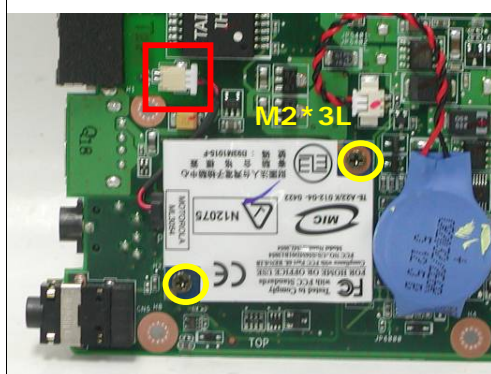
MOTHERBOARD

ASSEMBLY

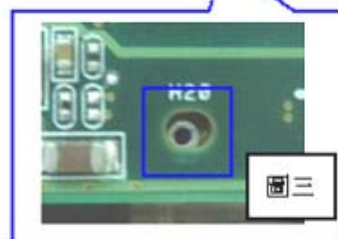
Motherboard

The illustrations below show how to assemble and install the motherboard of the notebook.

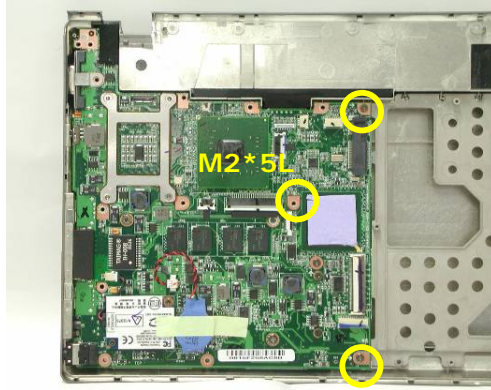
1. Install the modem board and secure 2 screws (M2.5*5L (K)).
2. Connect the modem cable and paste 1 piece of tape.



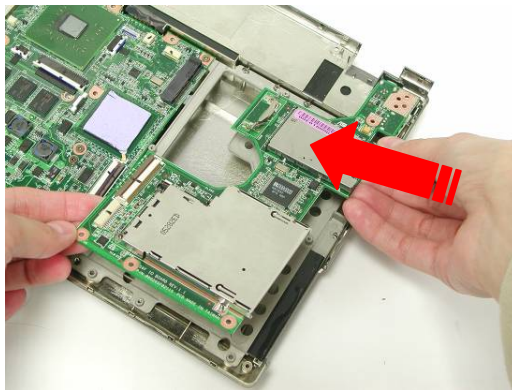
3. Assemble MB into Bottom case, and notify that the switch parts of MB should be assembled well with the WLAN switch button of bottom case.



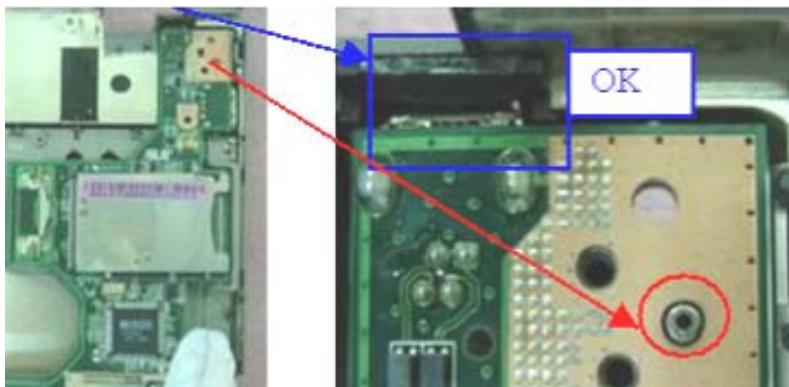
4. Secure 3 screws (M2*5L (K)) to secure the MB.



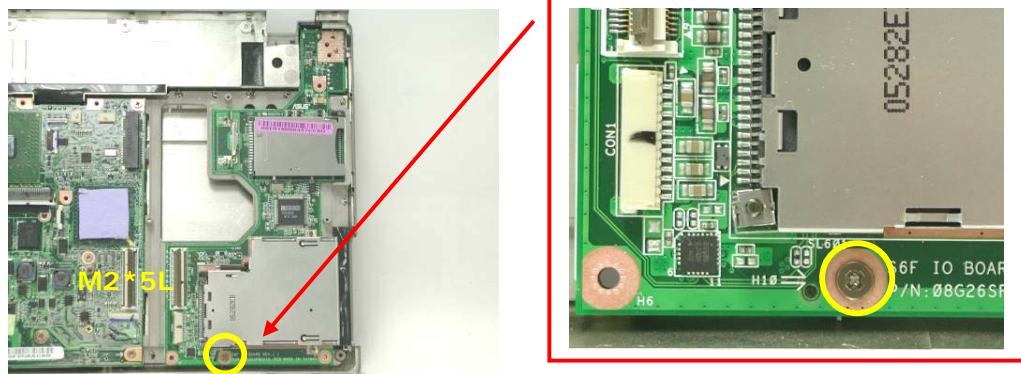
5. Install the IO board into the bottom case.



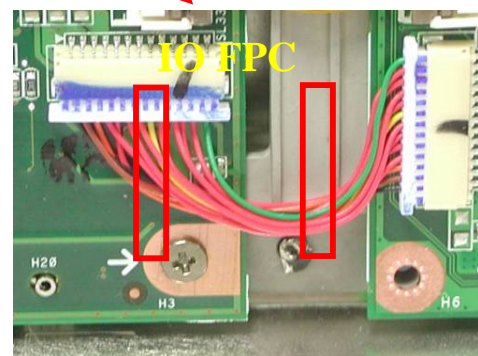
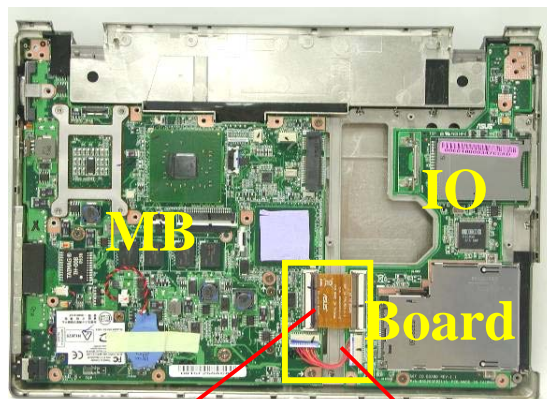
6. The IO board must be the right position.



7. Secure 1 screw (M2*5L (K)) to secure the IO board.



8. Insert the IO FPC & cable into the MB and press well.



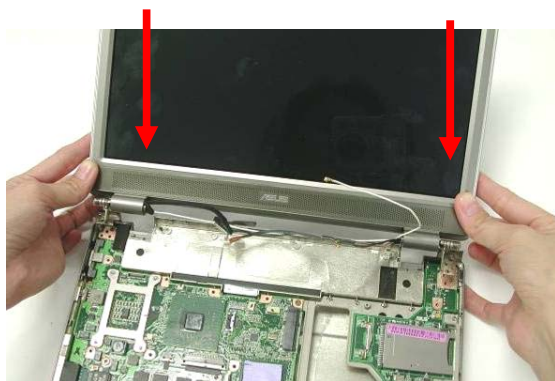
When opening and closing the Latch, should force the two ends of Latch at the same time ends of the Latch damaged.

TOP CASE
MODULE

Top Case Module

The illustrations below show how to assemble and install the top case module of the notebook.

1. Combine the Top case module and LCD module.

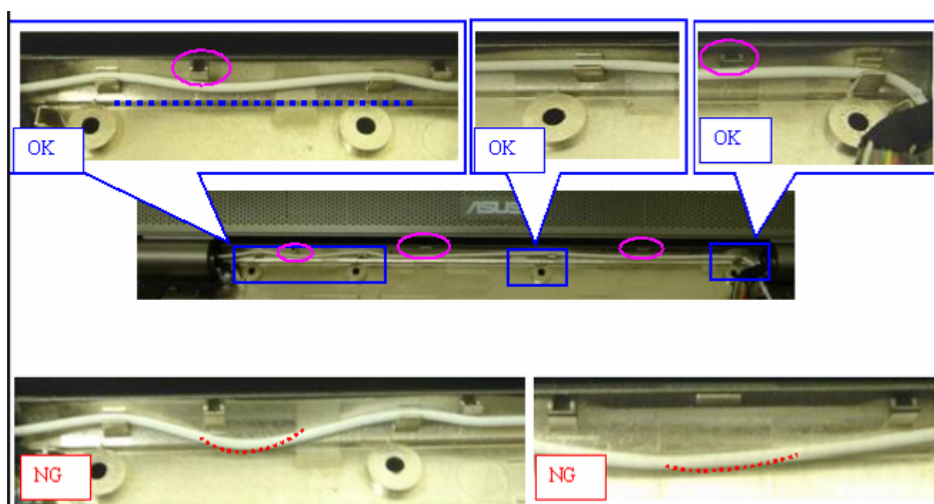


TOP CASE
MODULE
ASSEMBLY

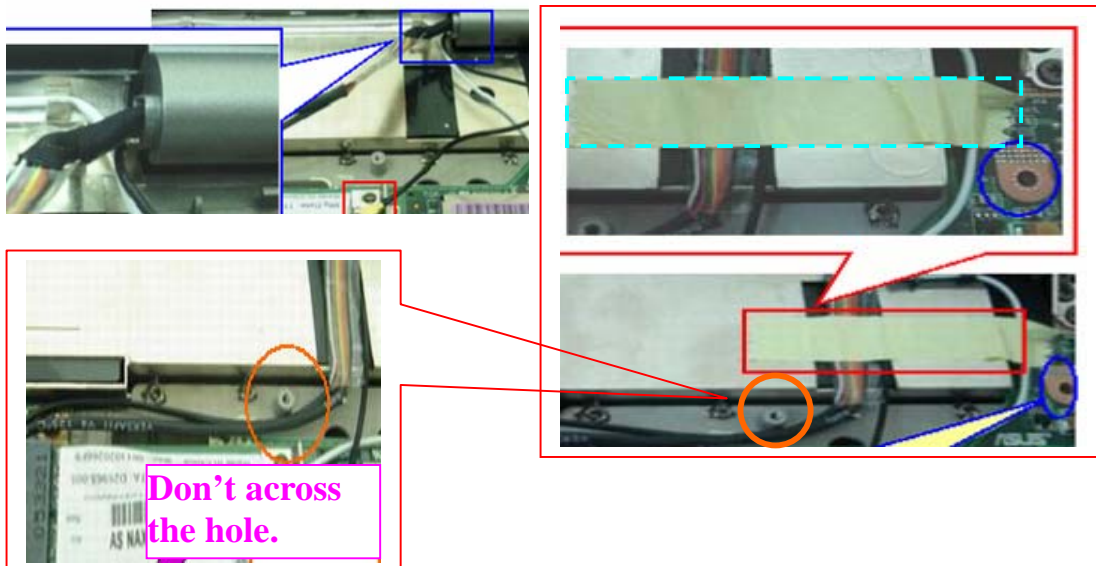
2. Secure 4 screws (M2*5L (K)) to fix the hinge.



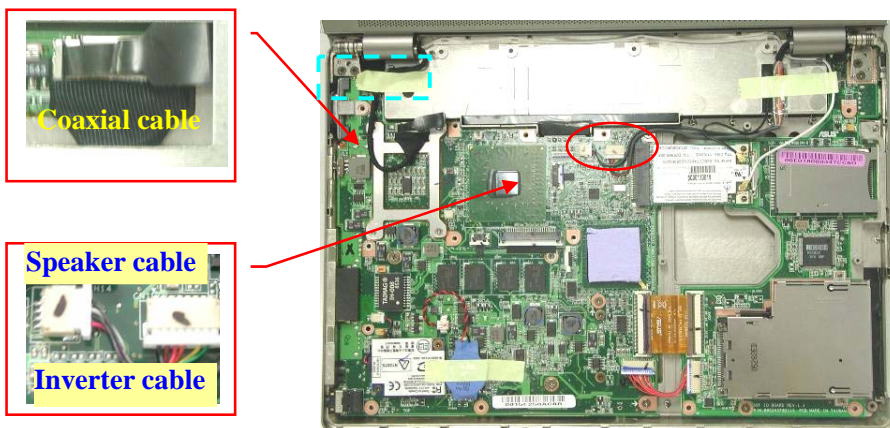
3. Arrange the Antenna-White into the hook of the bottom case. Notify the cable should be straight, don't hang down.



4. Arrange all cables and paste 1 piece of tape to fix them.



5. Connect coaxial & inverter & speaker cables.
6. Paste 1 piece of tape.



WALN MODULE

Assembling WLAN Module

The illustrations below show how to assemble and install the WALN module to the notebook.

1. Insert the WALN module into the WALN socket by an angle of 30 degree, and push down to latch.



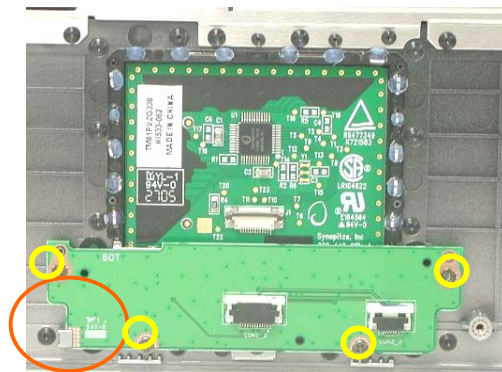
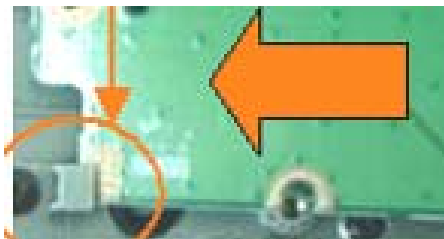
2. Connect 2 antenna cables and paste 1 piece of tape.



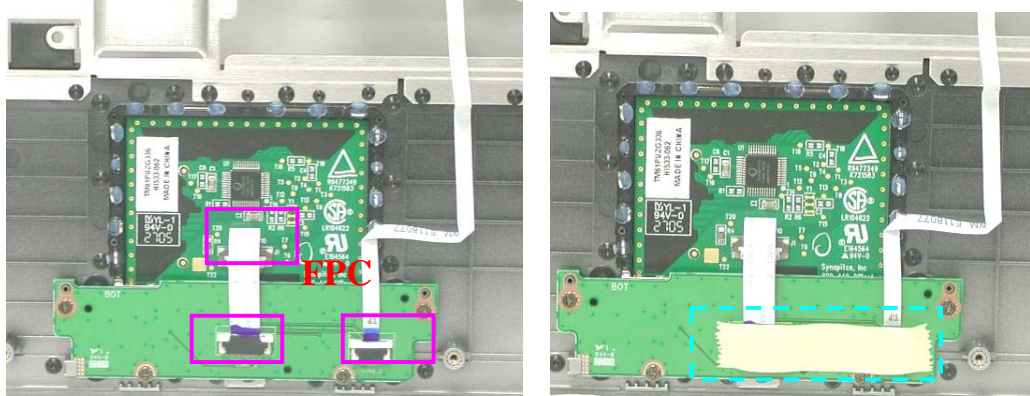
TOP CASE ASSEMBLE

Top Case Module

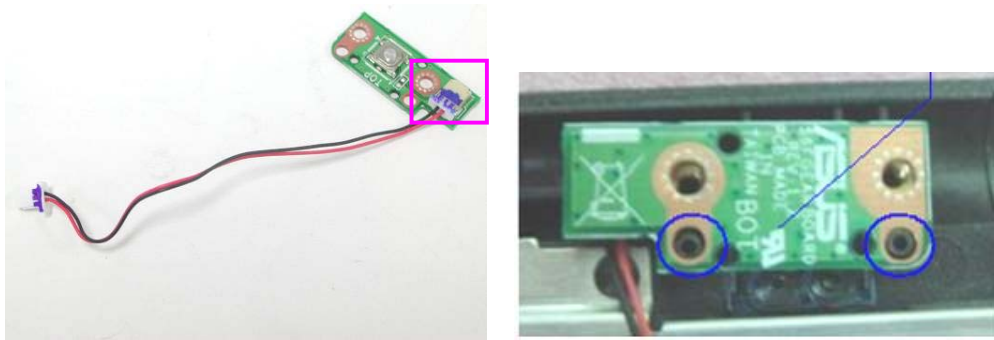
1. Insert the Touchpad bottom board into the right position and secure 4 screws (M2*3L(K)) to secure it.



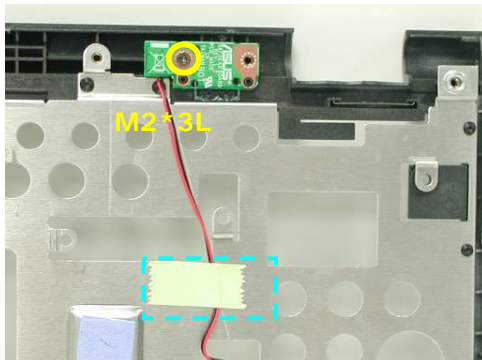
2. Disconnect 2 FFC cables on Touchpad bottom board.



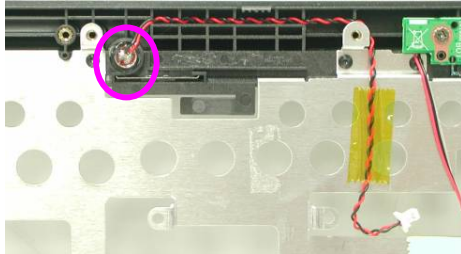
3. Connect the Gear board cable and insert the Gear board to the right position.



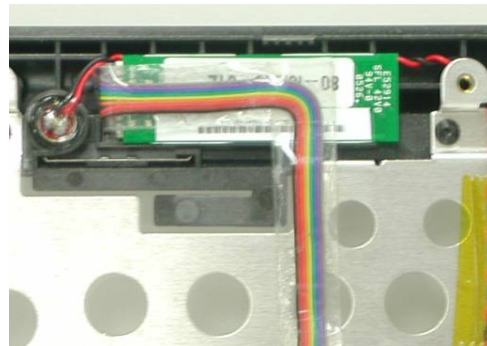
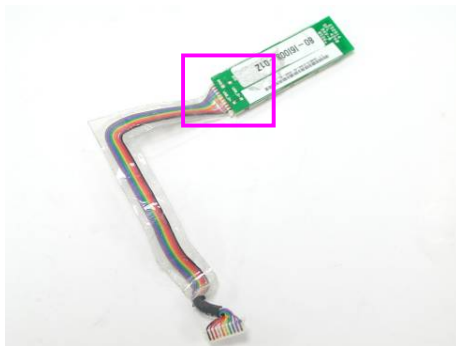
4. Secure 1 screw (M2*3L(K)) and paste 1 piece of tape on the Gear board



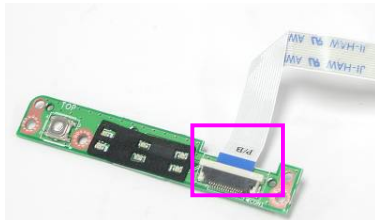
5. Insert the MIC module on the top case and paste 1 piece of tape to secure it.



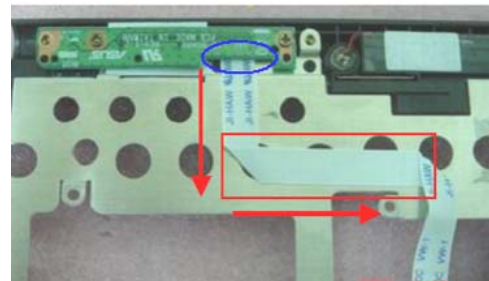
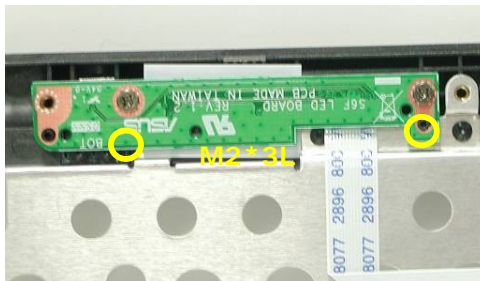
6. Connect the Bluetooth cable and insert the Bluetooth board to the top case.



7. Connect the LED FFC.

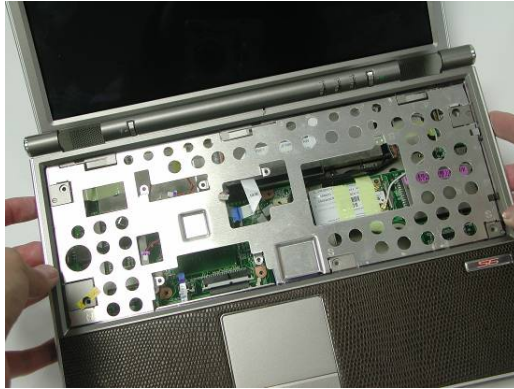


8. Insert the LED board and secure 2 screws (M2*3L(K)) on the top case.

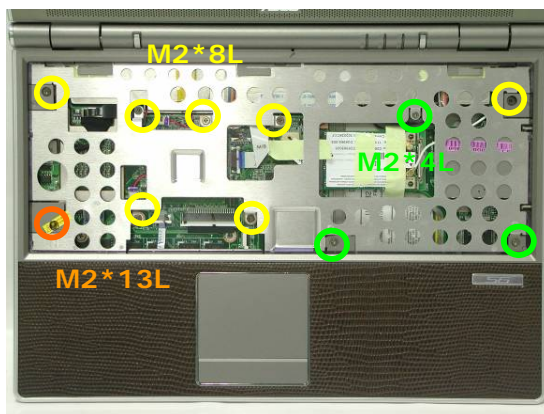


Assembling top Case Module

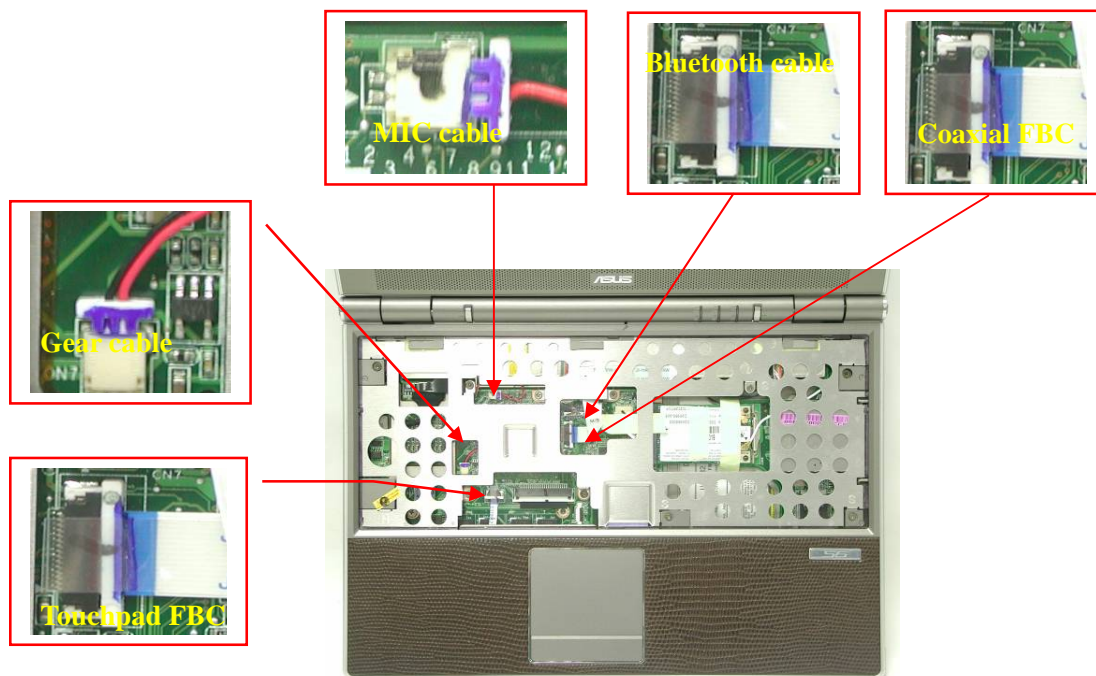
9. Combine the top case and LCD module.



10. Secure 7 screws (M2*8L (K)) & 1 screws (M2*13L (K)) & 3 screws (M2*4L (K)) on the bottom case.



11. Connect all cable & FBC on the Top case.



12. Secure 10 screws (M2*8L(K)) on the bottom case.



 KEYBOARD

Assembling Keyboard

The illustrations below show how to assemble and install the Keyboard of the notebook.

 KEYBOARD
ASSEMBLY

1. Place the Keyboard module on front side of the bottom case. Then connect Keyboard FPC Cable with a pair of tweezers.



2. Install Keyboard properly and note the lower side should inset first. Push the 3 latches to fix the keyboard.

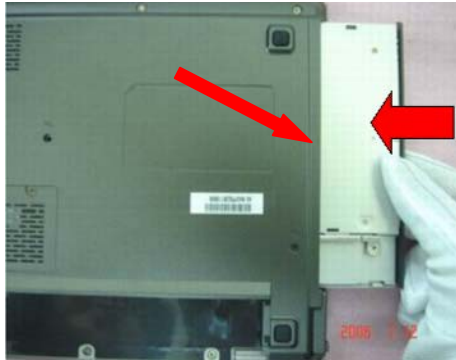


ODD MODULE

ODD Module

The illustrations below show how to assemble and install the ODD Module of the notebook.

1. Install the ODD Chassis.



2. Secure 2 screws (M2*4L (K)) to fix it.

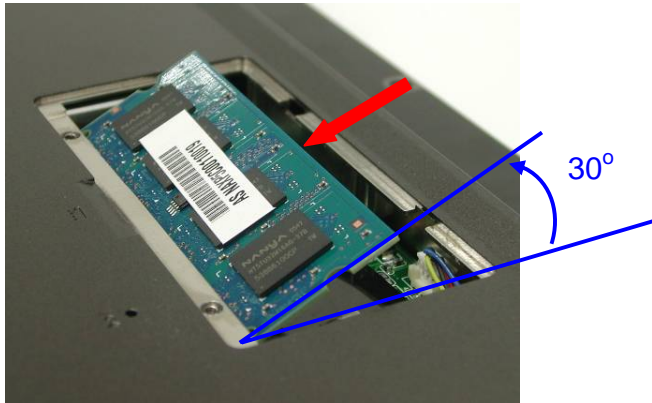


MEMORY
MODULE

Assembling Memory Module

The illustrations below show how to assemble and install the memory module to the notebook.

1. Insert the Memory module into the memory socket by an angle of 30 degree, and push down to latch the memory module.



2. Insert the DIMM cover and secure 2 screws (M2*3L (K)) to fix it.



BATTERY
MODULE

Battery Module

The illustrations below show how to install battery module of the notebook.

1. Install the battery module. Slide the battery latch to close the battery lock.



BATTERY
INSTALLATION
